



**Chris Schaefer**

**[Chris.Schaefer@bataandiary.com](mailto:Chris.Schaefer@bataandiary.com)**

**832-428-1977**

**[www.BataanDiary.com/Osher.html](http://www.BataanDiary.com/Osher.html)**



Yamamoto's Plan



Lieutenant General Douglas MacArthur

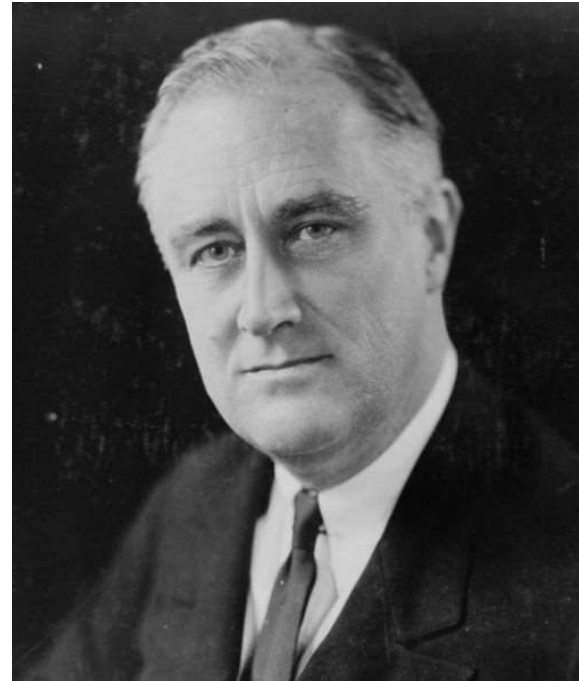


B-17 bomber



PRINCE FUMIMARO KONOYE

Prince Konoye  
Prime Minister



Franklin Roosevelt  
President





PRINCE FUMIMARO KONOYE

Prince Fumimaro Konoye,  
resigns



Emperor Hirohito



General Heideki Tojo,  
Prime Minister

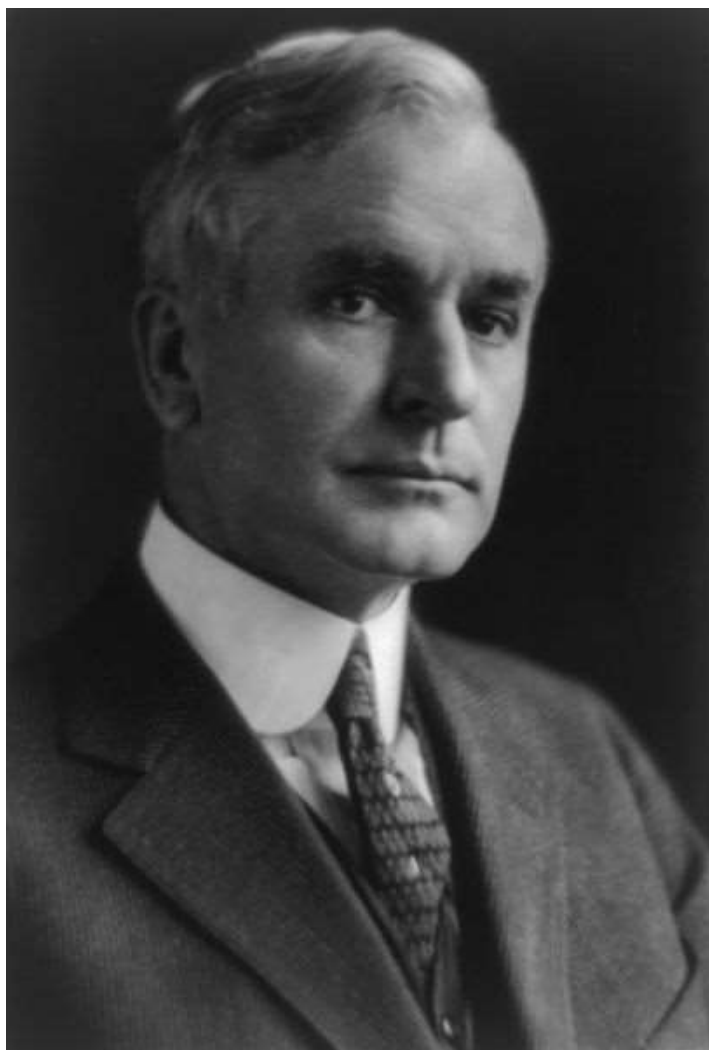


Admiral Cuichi Nagumo









U.S. Secretary of State Cordell Hull



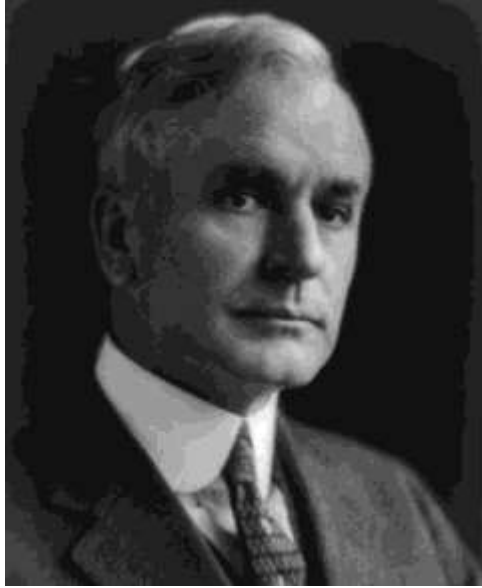
Admiral Nagumo's carrier fleet

FDR

Frank Knox,  
Secretary of the Navy



Admiral Harold R. Stark,  
Chief of Naval Operations



Cordell Hull,  
Secretary of State

Henry L. Stimson,  
Secretary of War



General George C. Marshall,  
Chief of Staff of the U.S. Army

U.S. and Atlantic  
Fleet commanders

Admiral Kimmel  
Pearl Harbor,  
Pacific Fleet

Admiral Hart  
Manila Bay,  
Asiatic Fleet

General MacArthur  
Philippines

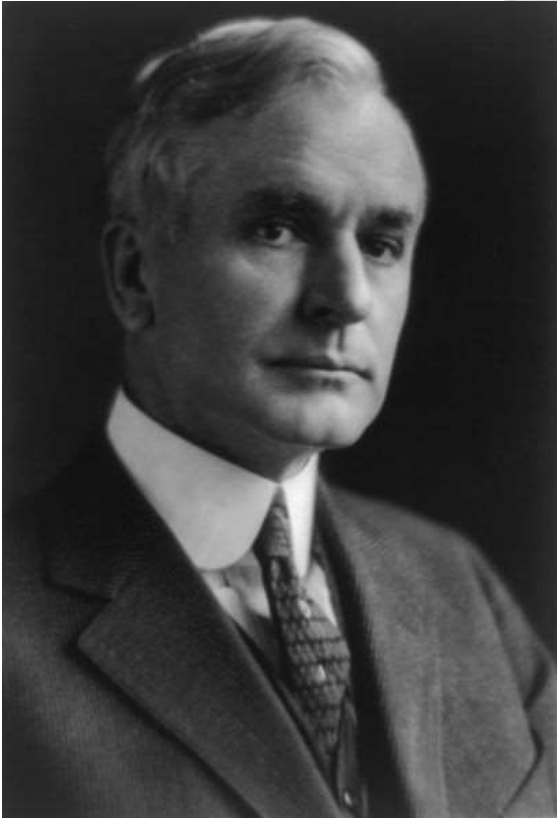
General Short  
Hawaii

U.S. and European  
Army commanders

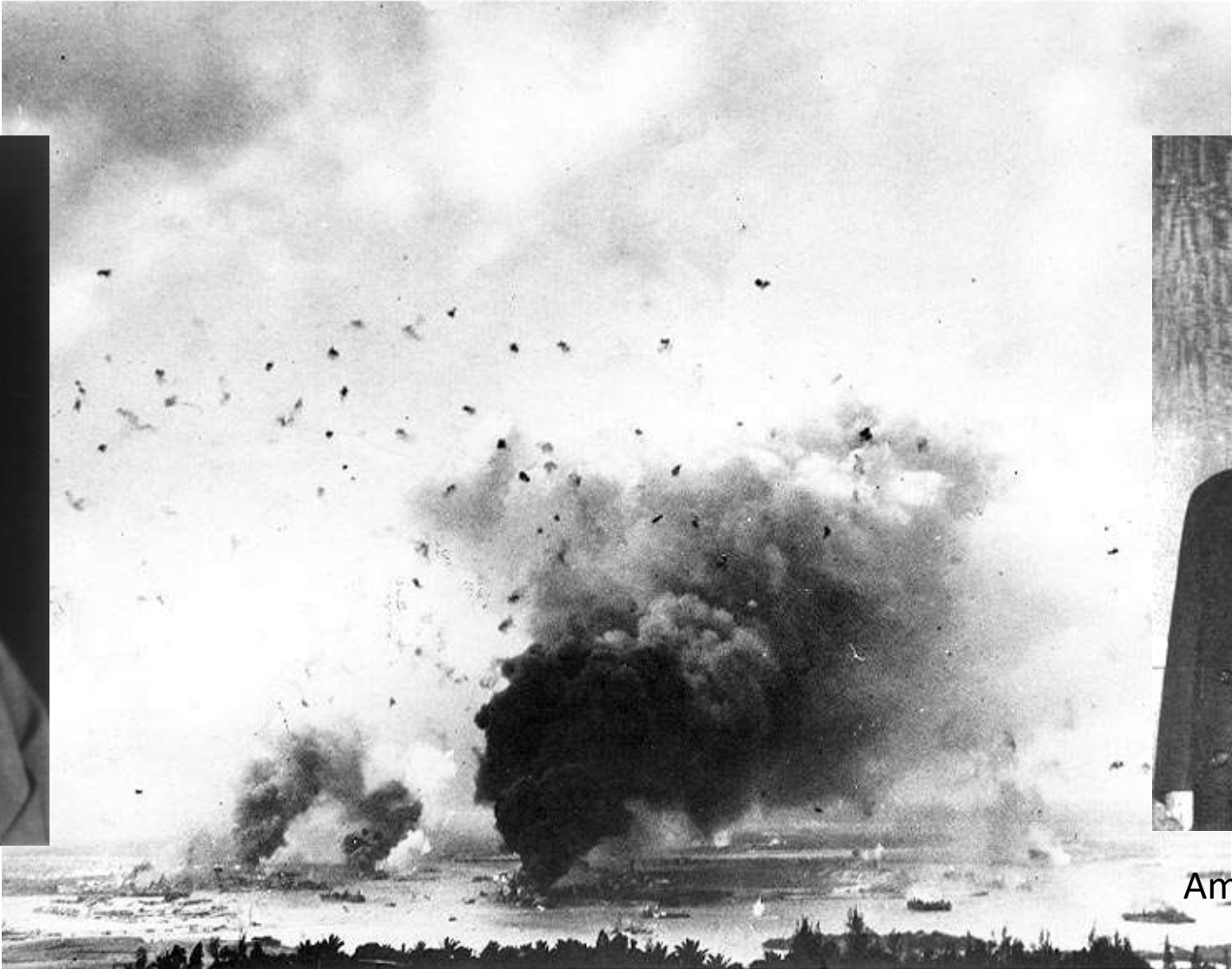




Photo # 80-G-40056 Pearl Harbor during the Japanese attack, 7 Dec. 1941



U.S. Secretary of State  
Cordell Hull

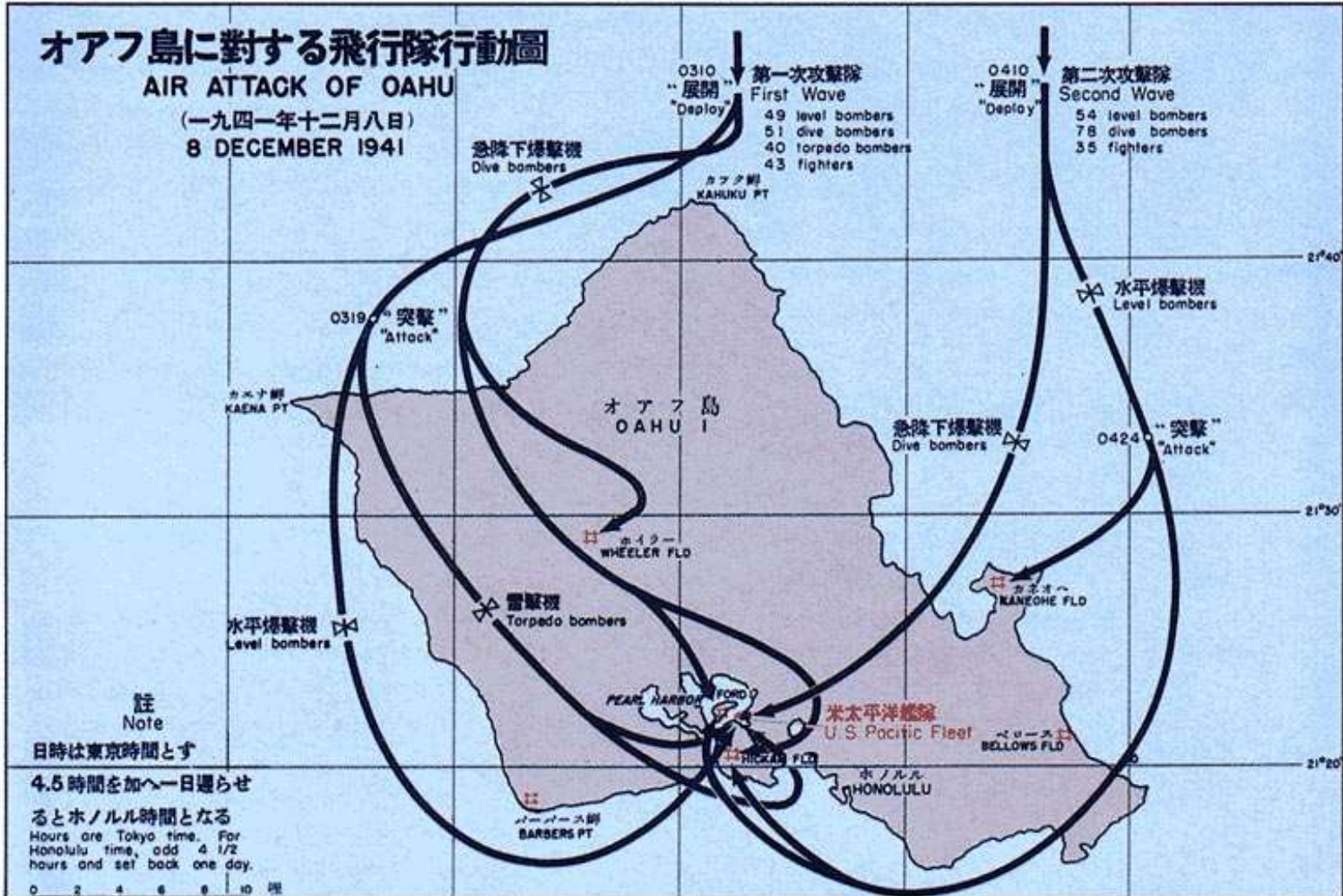


Arizona burns and sinks in Pearl Harbor



Amb. Kichisaburo Nomura,  
Special Envoy  
Saburo Kurusu





The Initial Attack on Pearl Harbor

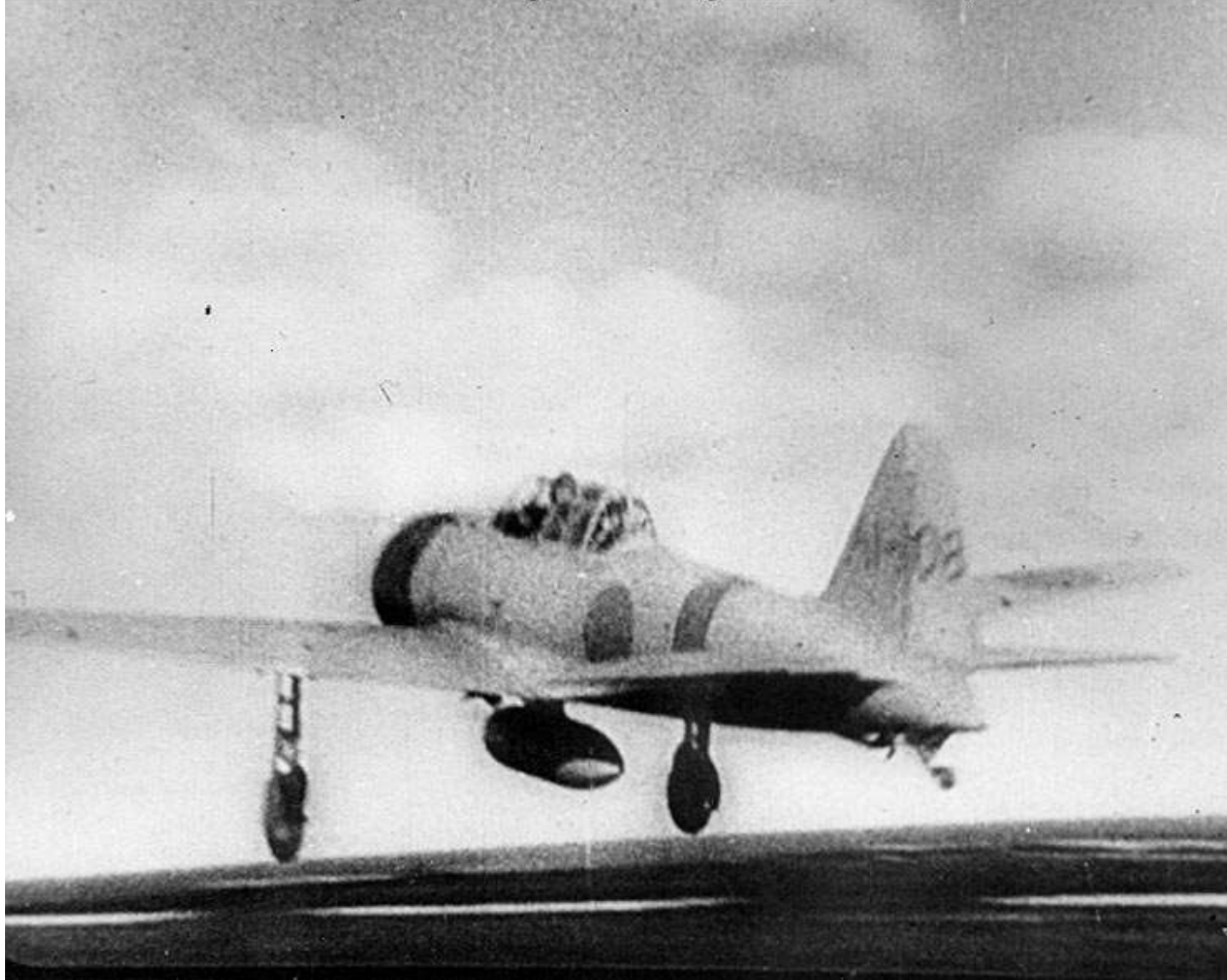


Photo # 80-G-182259 Japanese planes prepare to take off for the Pearl Harbor attack, 7 Dec. 1941



Dive bombers prepare for takeoff. A/c carrier Soryu in background

Photo # 80-G-182252 Japanese "Zero" fighter leaves Akagi to attack Pearl Harbor, 7 Dec. 1941



Zero fighter takes off from a/c carrier Akagi.

# Pearl Harbor Anchorage

7:55 A.M. Dec. 7, 1941





Photo # NH 50930 Japanese aerial photo of Pearl Harbor under attack, 7 Dec. 1941, looking east



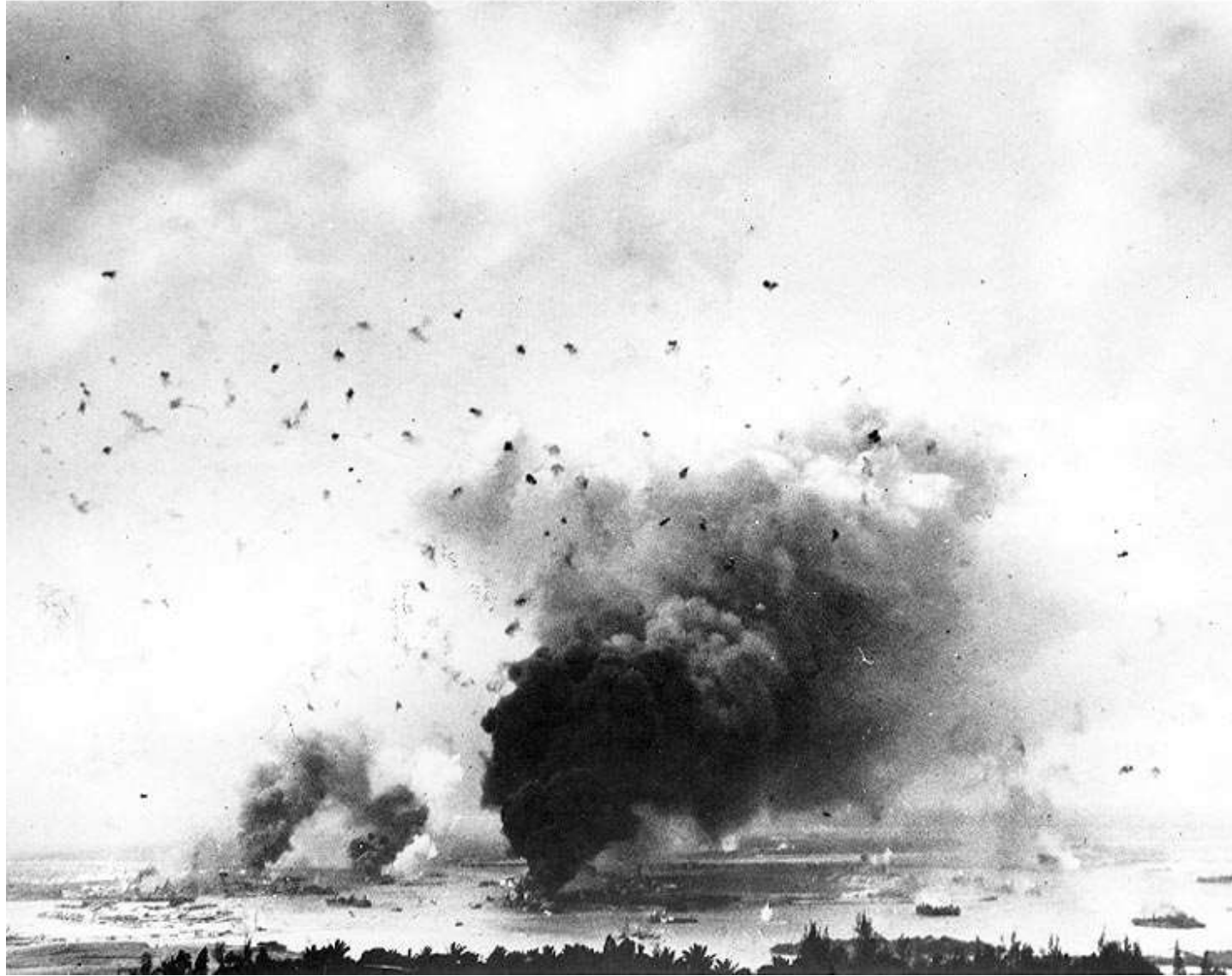
Battleship West Virginia hit by torpedo.

Photo # 80-G-266626 USS Utah capsizing at Pearl Harbor, 7 December 1941



Battleship Utah capsizes.

Photo # 80-G-40056 Pearl Harbor during the Japanese attack, 7 Dec. 1941



Battleship Arizona burns in Pearl Harbor

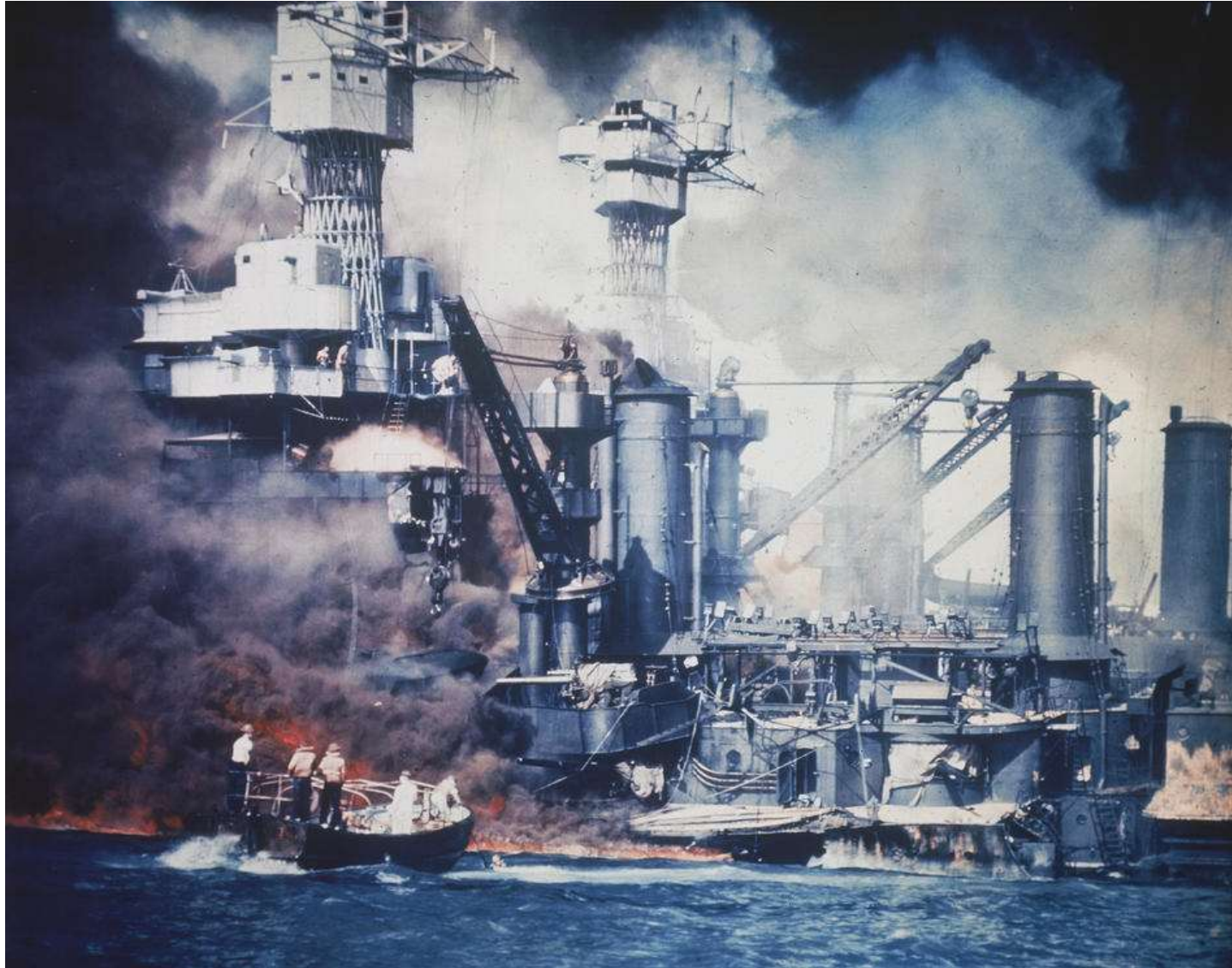




Destroyer Shaw explodes.



Pearl Harbor in flames.



Pearl Harbor rescue operations.



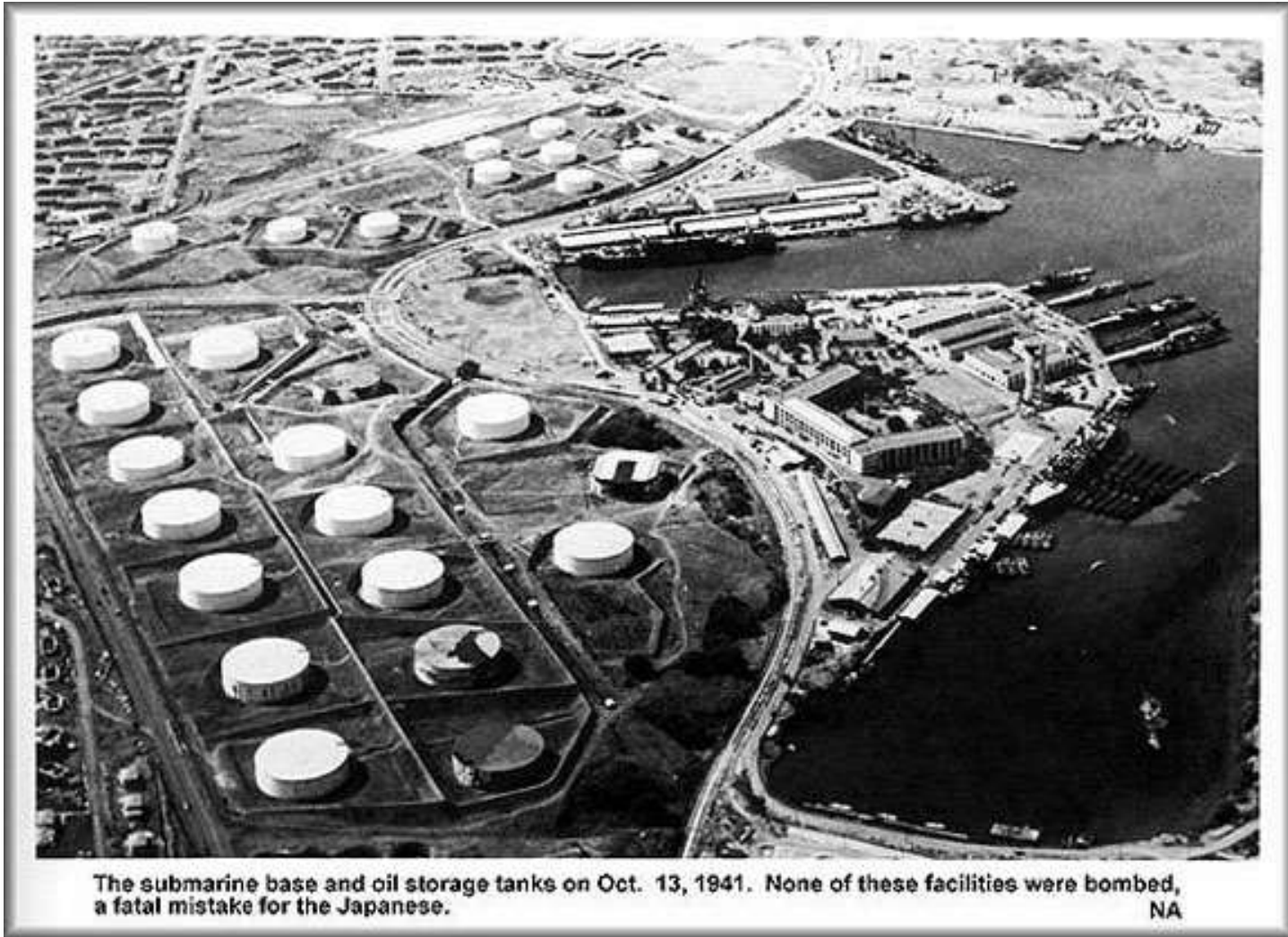


Destroyers Cassine and Downes, battleship Pennsylvania.

# Pearl Harbor Anchorage

7:55 A.M. Dec. 7, 1941



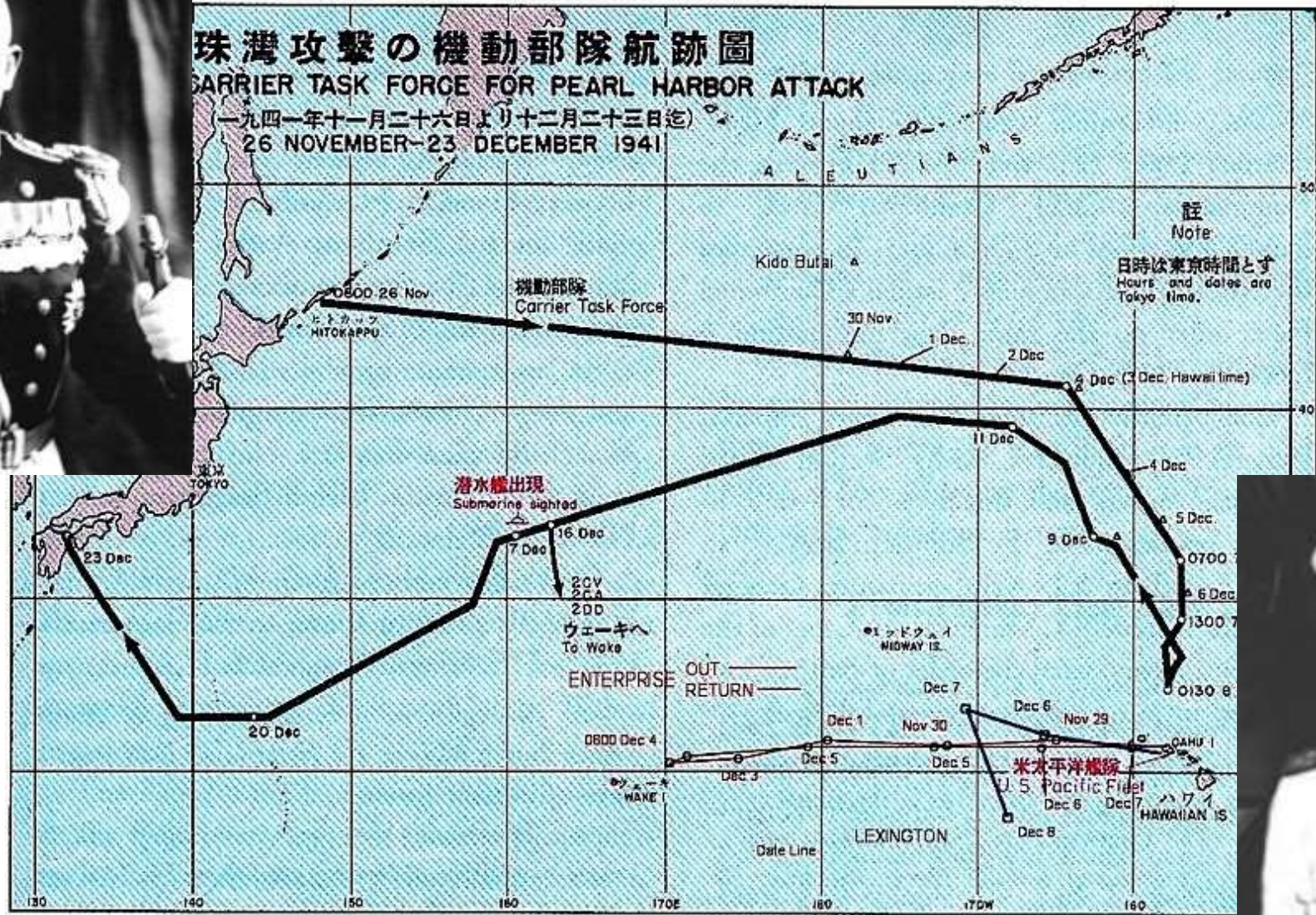


The submarine base and oil storage tanks on Oct. 13, 1941. None of these facilities were bombed, a fatal mistake for the Japanese.

NA

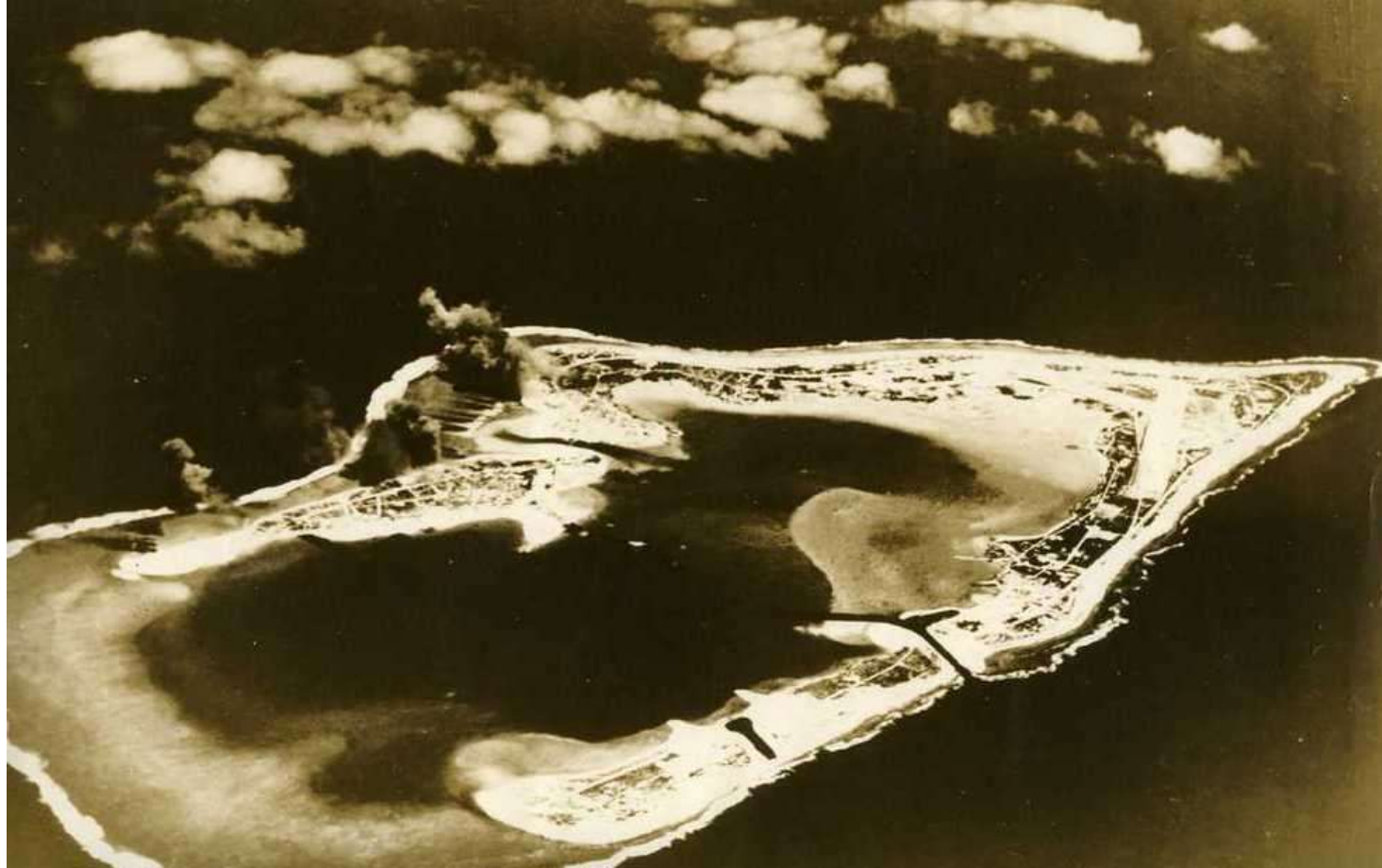
Petroleum storage facilities.





Route of Admiral Nagumo's fleet



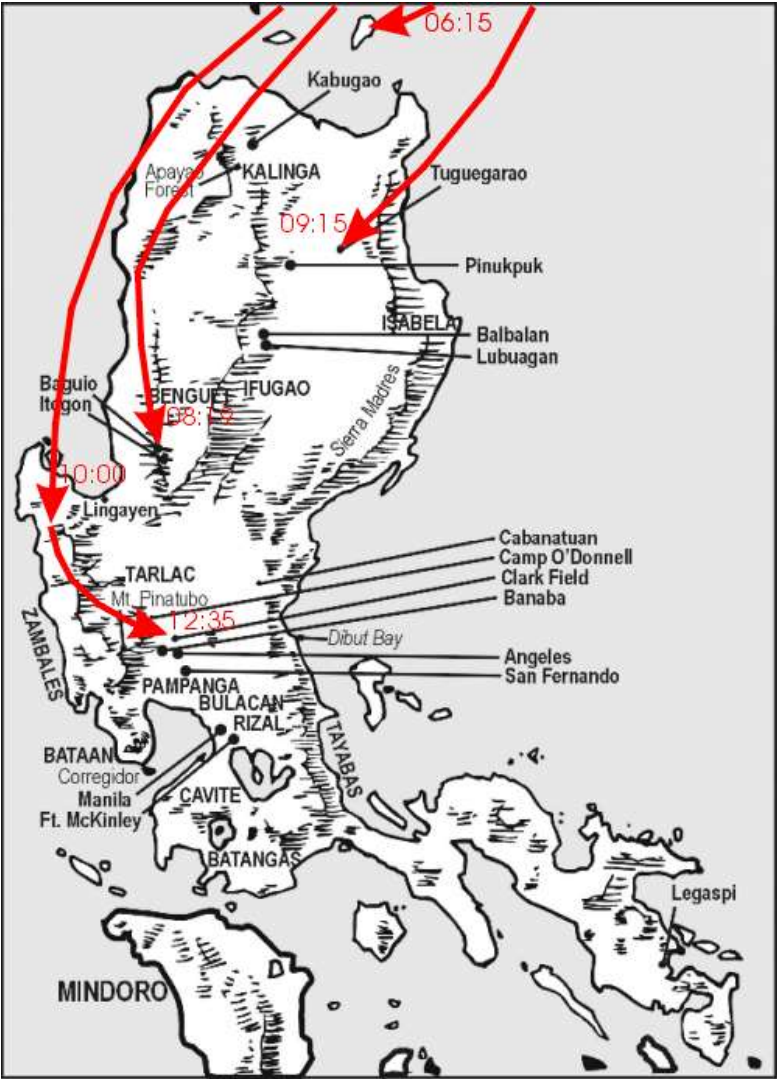


Wake Island, 1941

December 7,  
Continued...



Japanese attacks



Japanese air attacks





Major General Lewis H. Brereton,  
Commander of the Far East Air Force



Destroyed U.S. aircraft



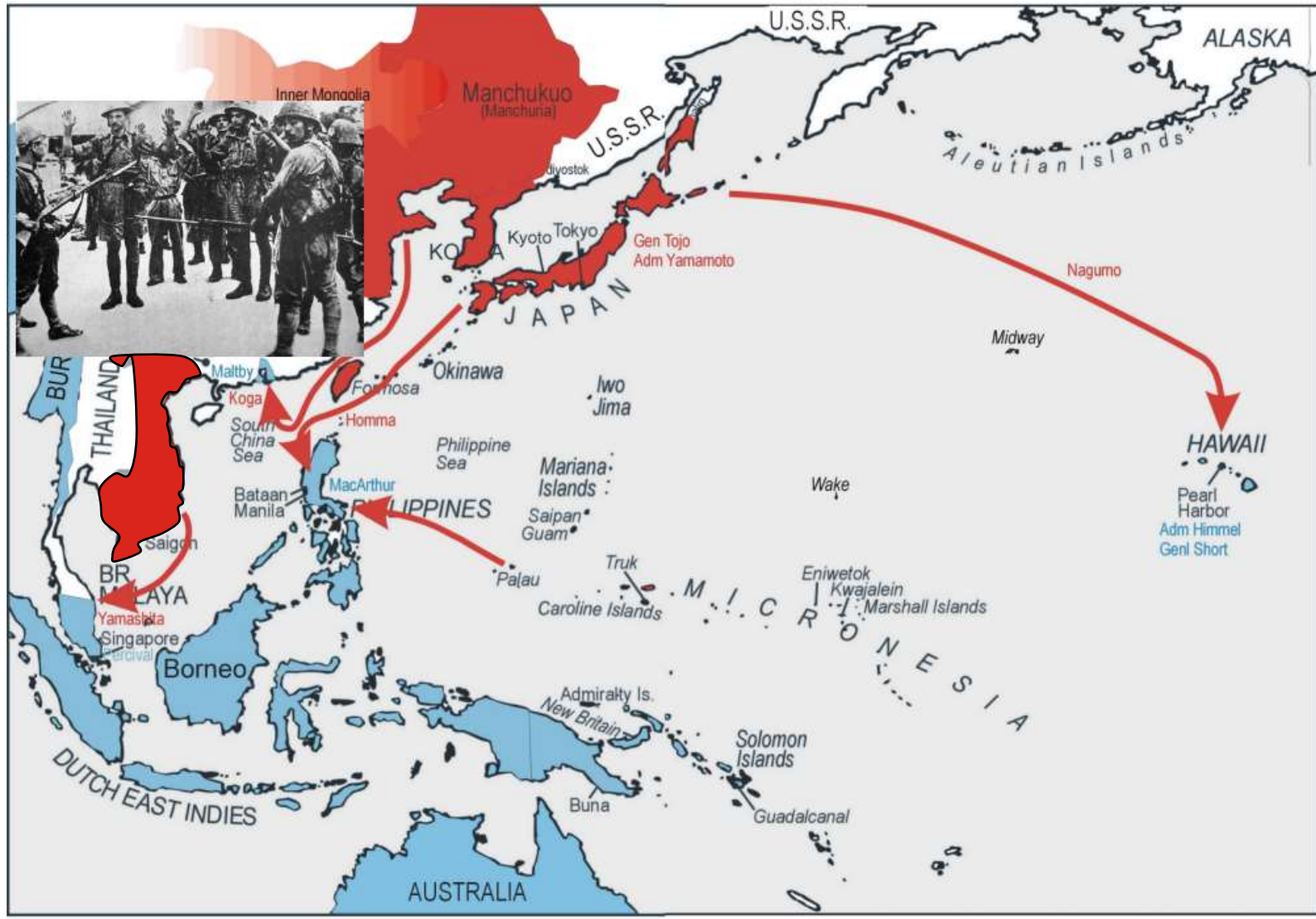
Destroyed P-35 at Nichols Field



Cavite Naval Yard

# Hong Kong, Malaya and Singapore





Dec 25, 1941, British surrender at Hong Kong

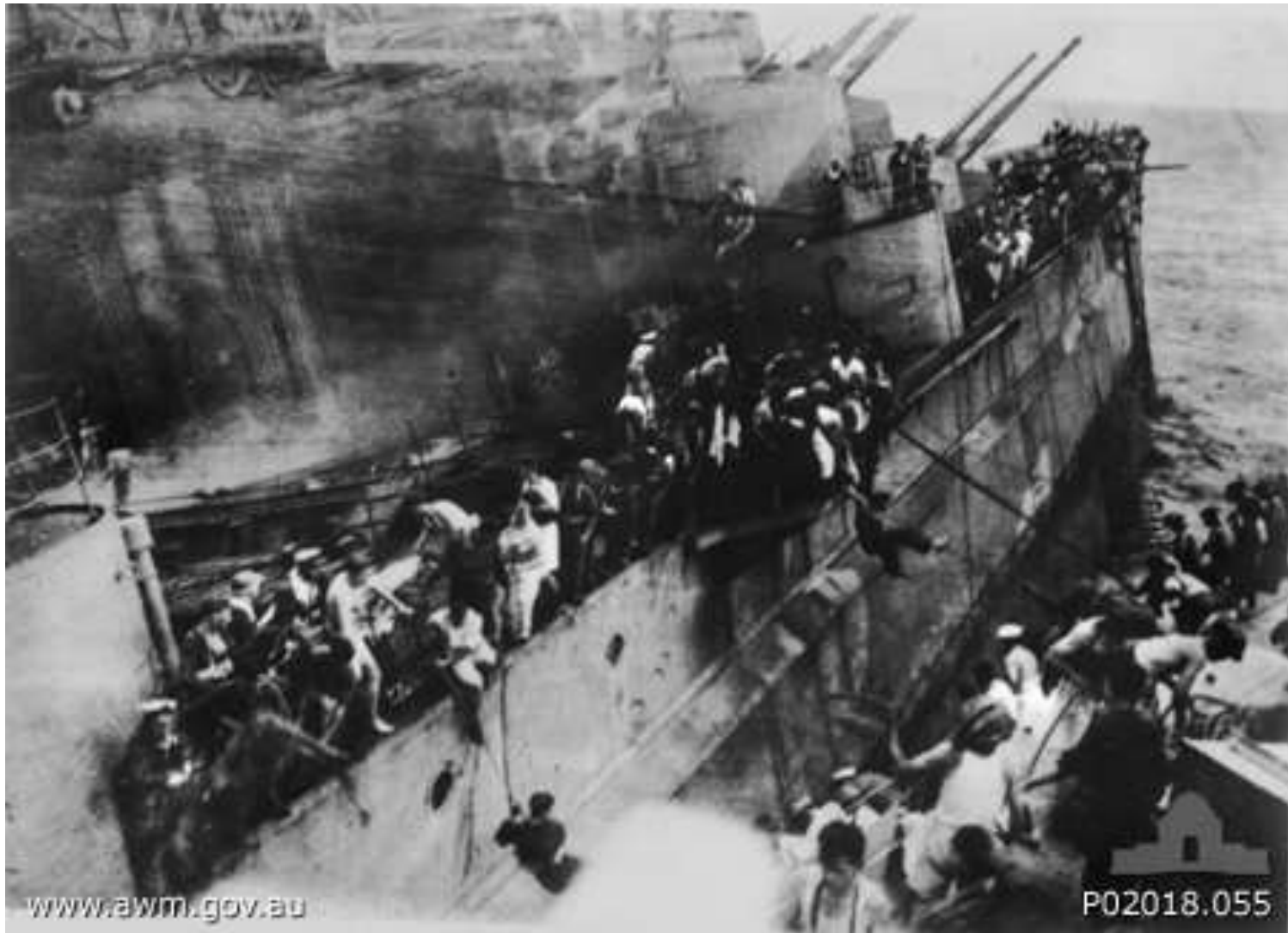


General Yamashita attacks British Malaya



Prince of Wales and Repulse attacked by Japanese bombers





Abandon ship—British sailors escape from the Prince of Wales





Roosevelt signs the Declaration of War

 **El Paso Herald-Post** Home Edition  
Weather Forecast: Considerable cloudiness tonight and tomorrow; slightly warmer tonight. (Details on Page 16.)  
VOL. LXXI, NO. 295 EL PASO, TEXAS, MONDAY, DECEMBER 8, 1941 DELIVERED BY EL PASO IN A WEEK  
THREE CENTS IN EL PASO  
FIVE CENTS ELSEWHERE

# U. S. DECLARES WAR!

## 1500 KILLED IN HAWAII

# JAPS BOMBARD MANILA

U. S. FLEET IN BATTLE; Philippines Under Fire CONGRESS GRANTS F.R.'S





Lieutenant General Walter C. Short and Admiral Husband E. Kimmel

Photo # 80-G-466244 Adm. Chester W. Nimitz, USN, circa 1942



Admiral Chester W. Nimitz

# Battle for the Philippines





Japanese landings in the Philippines.



Japanese "Zero" fighter



U.S. P-40 fighters



Filipino Air Ace  
Captain Jesus Villamor



Boeing P-26 fighter



B-17 Bomber pilot Captain Colin Kelly





Japanese landings in the Philippines.



Japanese Lieutenant General Homma Masaharu  
comes ashore in the Philippines



The U.S. retreat.  
General Wainwright's delay lines.

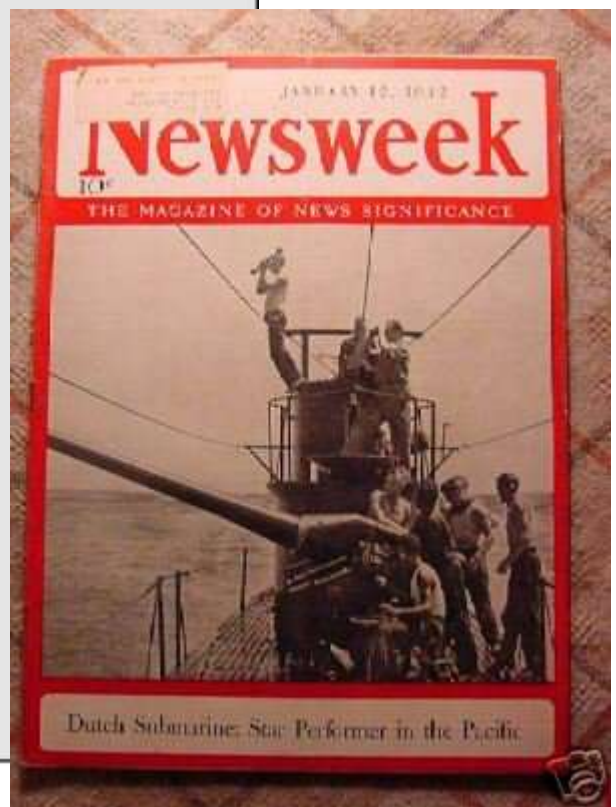


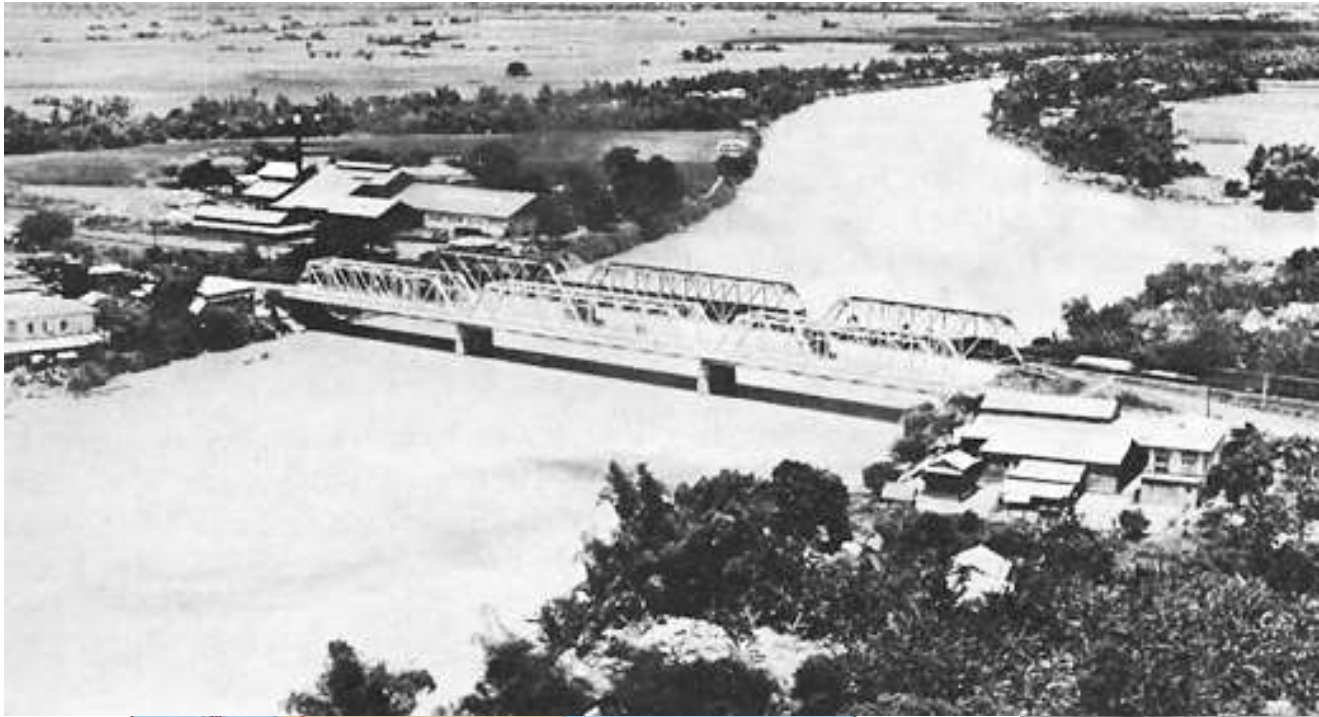
Japanese illustration of the invasion of Guam  
December 10, 1941



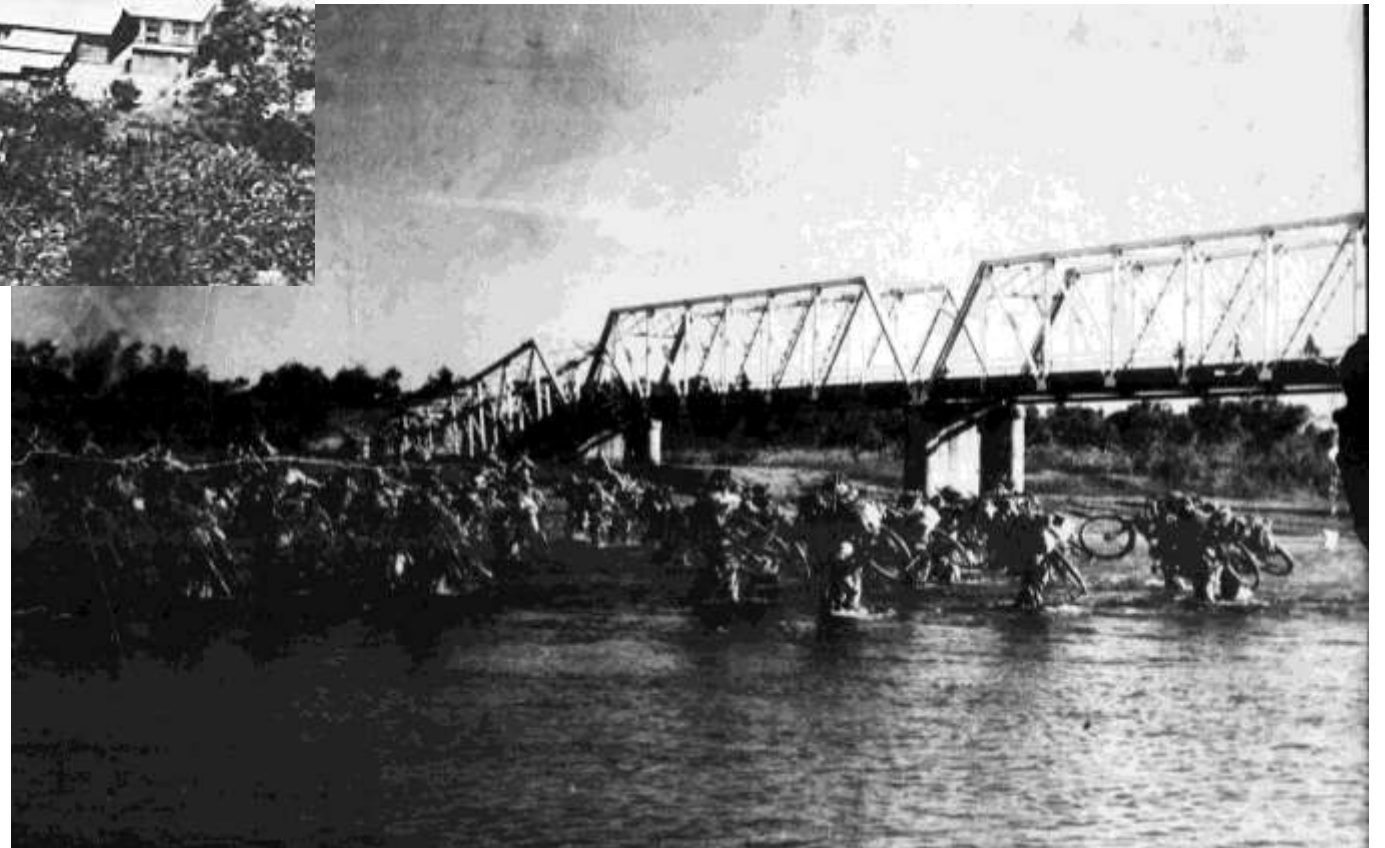


Japanese attack Borneo.



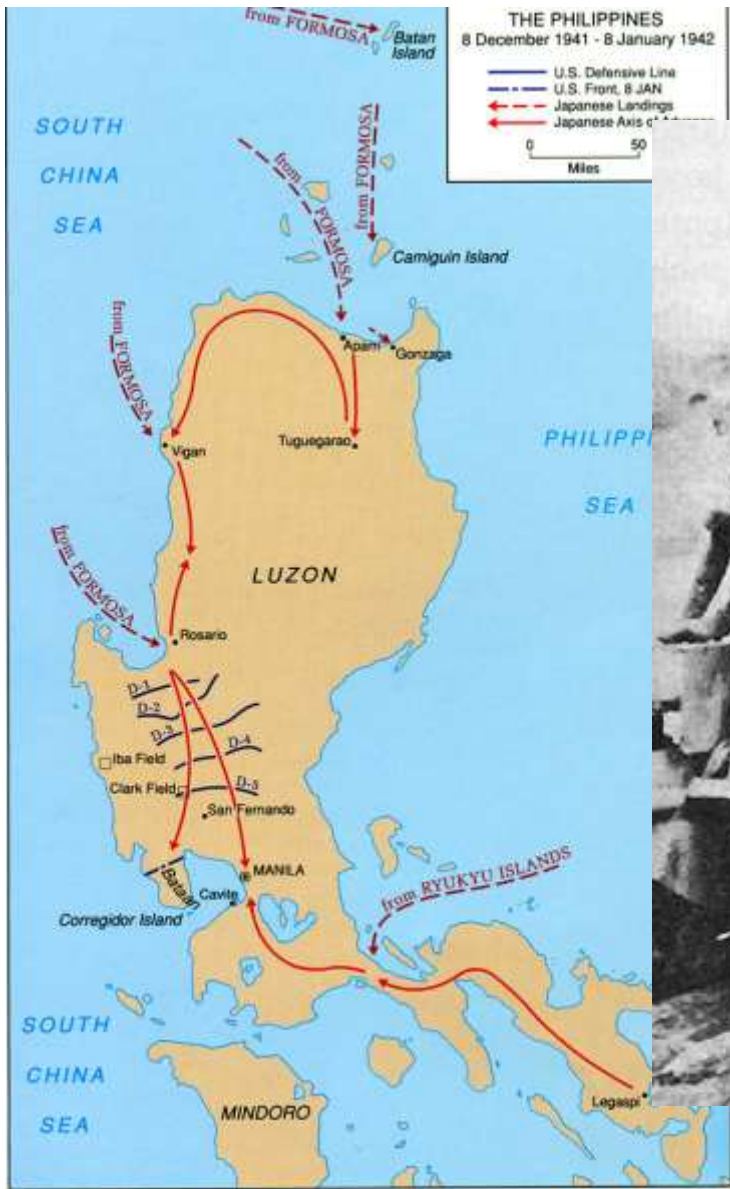


The Calumpit Bridges.



# Japanese Administration of the Philippines





Japanese approach Manila.





Lieutenant General Homma Masaharu



Santo Tomas University, Manila

比島行政府内務部地方局  
PHILIPPINE EXECUTIVE COMMISSION  
DEPARTMENT OF THE INTERIOR  
BUREAU OF LOCAL GOVERNMENTS

CERTIFICATE No. \_\_\_\_\_ PROVINCE OF \_\_\_\_\_  
RADIO SERIAL No. \_\_\_\_\_ MUNICIPALITY OF \_\_\_\_\_  
MAKE \_\_\_\_\_ CITY OF \_\_\_\_\_

ラヂオ受信機登録改修證書  
CERTIFICATE OF REGISTRATION AND RECONDITIONING  
OF RADIO RECEIVING SET

BUREAU OF LOCAL GOVERNMENTS  
BY: \_\_\_\_\_  
DATE \_\_\_\_\_ DISTRICT INSPECTOR

證明番號第 \_\_\_\_\_ 號 CERTIFICATE No. \_\_\_\_\_

ラヂオ受信機登録改修證書  
CERTIFICATE OF REGISTRATION AND RECONDITIONING  
OF RADIO RECEIVING SET

比島派遣軍電政局  
DENSEI-KYOKU  
比島行政府 (乙) (B)  
PHILIPPINE EXECUTIVE COMMISSION

Cert. CC-531 October 8, 1943 Cavite Prov, Cavite City Make: RCA Sn. 08323

Radio permit.









Soldiers on Bataan listen to the “Voice of Freedom” from Corregidor.

# Battle of Bataan



Bataan Peninsula.  
The Abucay Line and the Pilar-Bagac Line.



Lieutenant General MacArthur and Brigadier General Jones on Bataan





Philippine Scout soldiers man the MLR (Main Line of Resistance)  
at Abucay Hacienda

Copy

HEADQUARTERS  
UNITED STATES ARMY FORCES IN THE FAR EAST  
FORT MILLS, P.I.

January 15, 1942

Subject: MESSAGE FROM GEN. MACARTHUR

TO: ALL UNIT COMMANDERS

The following message from Gen. MacArthur will be read and explained to all troops. Every Company Commander is charged with the personal responsibility for the delivery of this message. Each Headquarters will follow-up to insure reception by every Company or similar Unit.

Help is on the way from the United States. Thousands of troops and hundreds of planes are being dispatched. The exact time of arrival of reinforcements is unknown as they will have to fight their way through Japanese against them. It is imperative that our troops hold until these reinforcements arrive.

No further retreat is possible. We have more troops in Bataan than the Japanese have thrown against us, our supplies are ample; a determined defense will defeat the enemy's attack.

It is a question now of courage and of determination. Men who run will merely be destroyed but men who fight will save themselves and their country.

I call upon every soldier in Bataan to fight in his assigned position, resisting every attack. This is the only road to salvation. If we fight we will win; if we retreat we will be destroyed.

" MACARTHUR "

By Command of General MacArthur  
(Signed) Carl H. Seals  
Colonel, AGF  
Adjutant General



**U.S. Cavalry's Last Charge**  
26th Cavalry Regiment (Philippine Scouts)  
Bataan, January, 1942



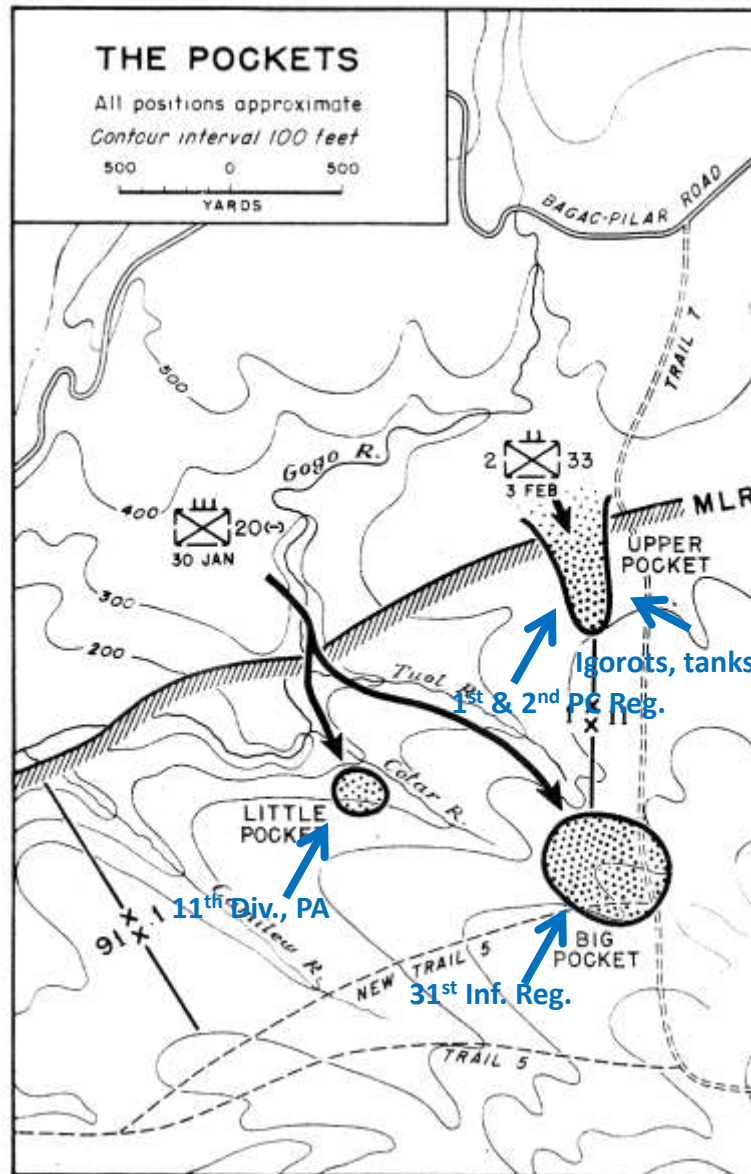
U.S. 26<sup>th</sup> Cavalry drives the Japanese out of Morong.



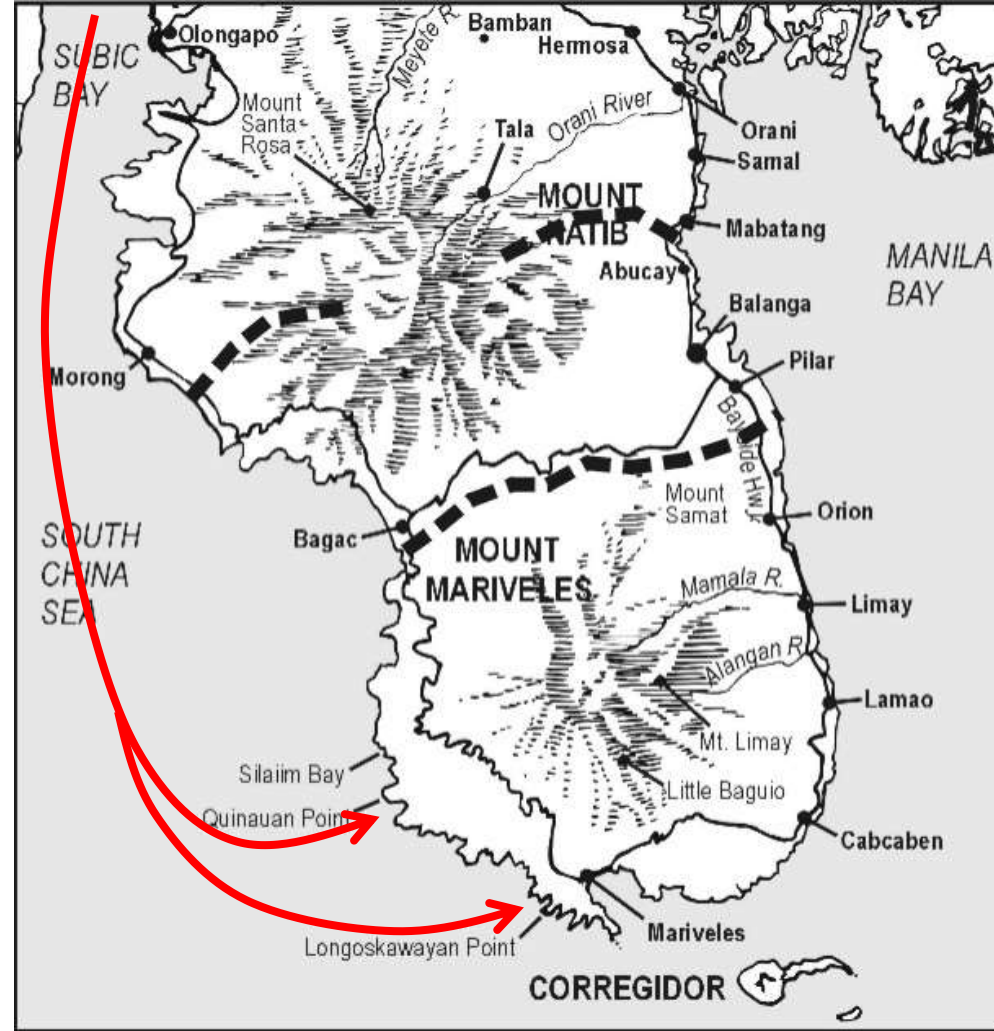


Bataan Peninsula.  
Japanese scale Mount Natib





Battle of the "Pockets."

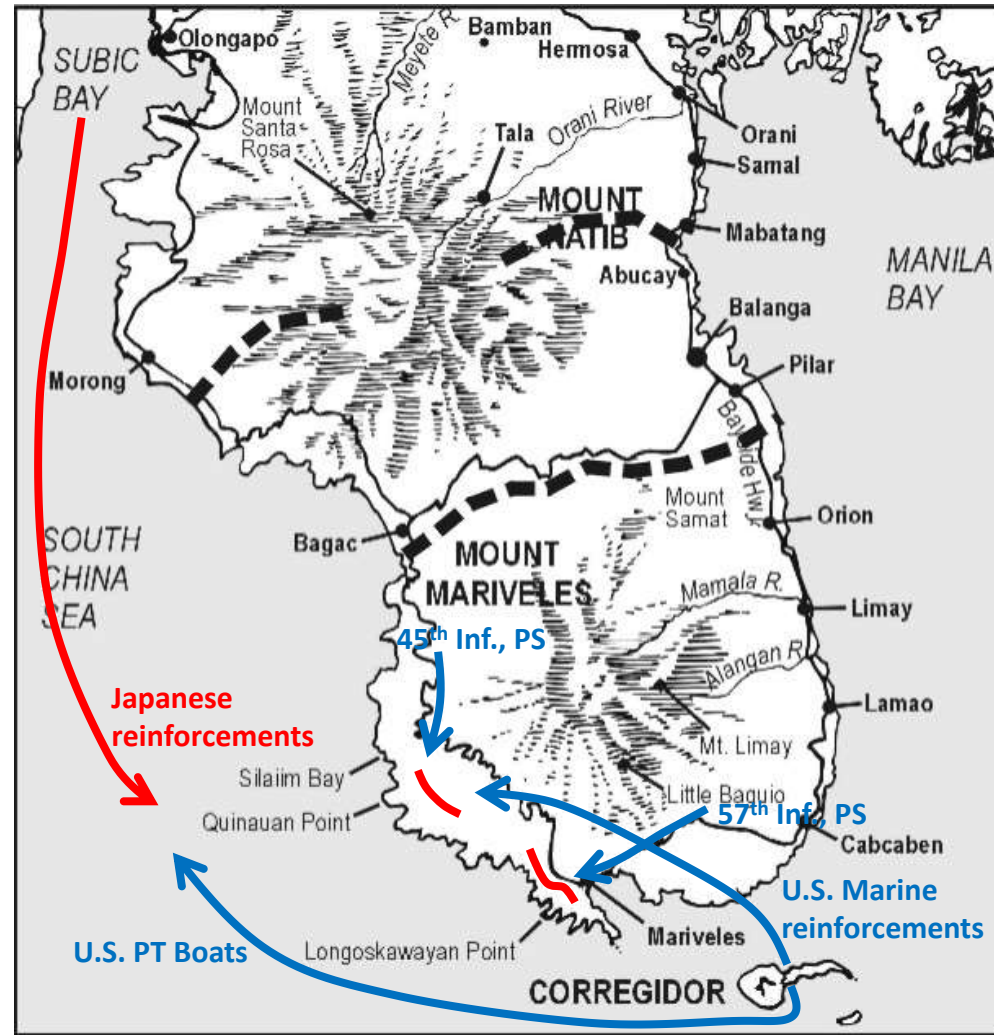


Bataan Peninsula.  
Japanese amphibious assault at the "Points."





Jungle fighting near the "Points" on Bataan



Bataan Peninsula.  
Japanese defeat at the "Points."





U.S. Navy Patrol Torpedo (PT) Boat



Bataan Peninsula.

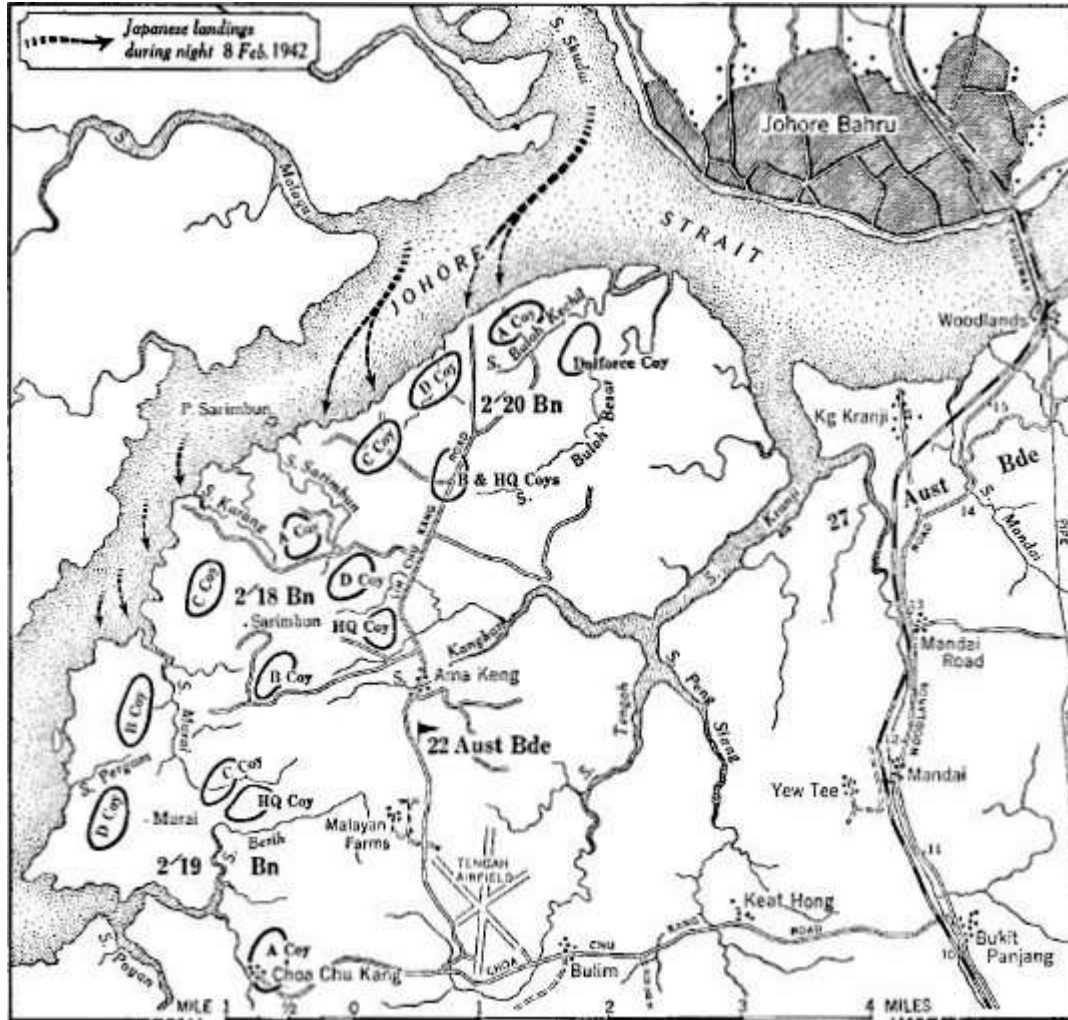


# Malaya, Singapore and the Dutch East Indies





Japanese troops mop up Kuala Lumpur, Malaya



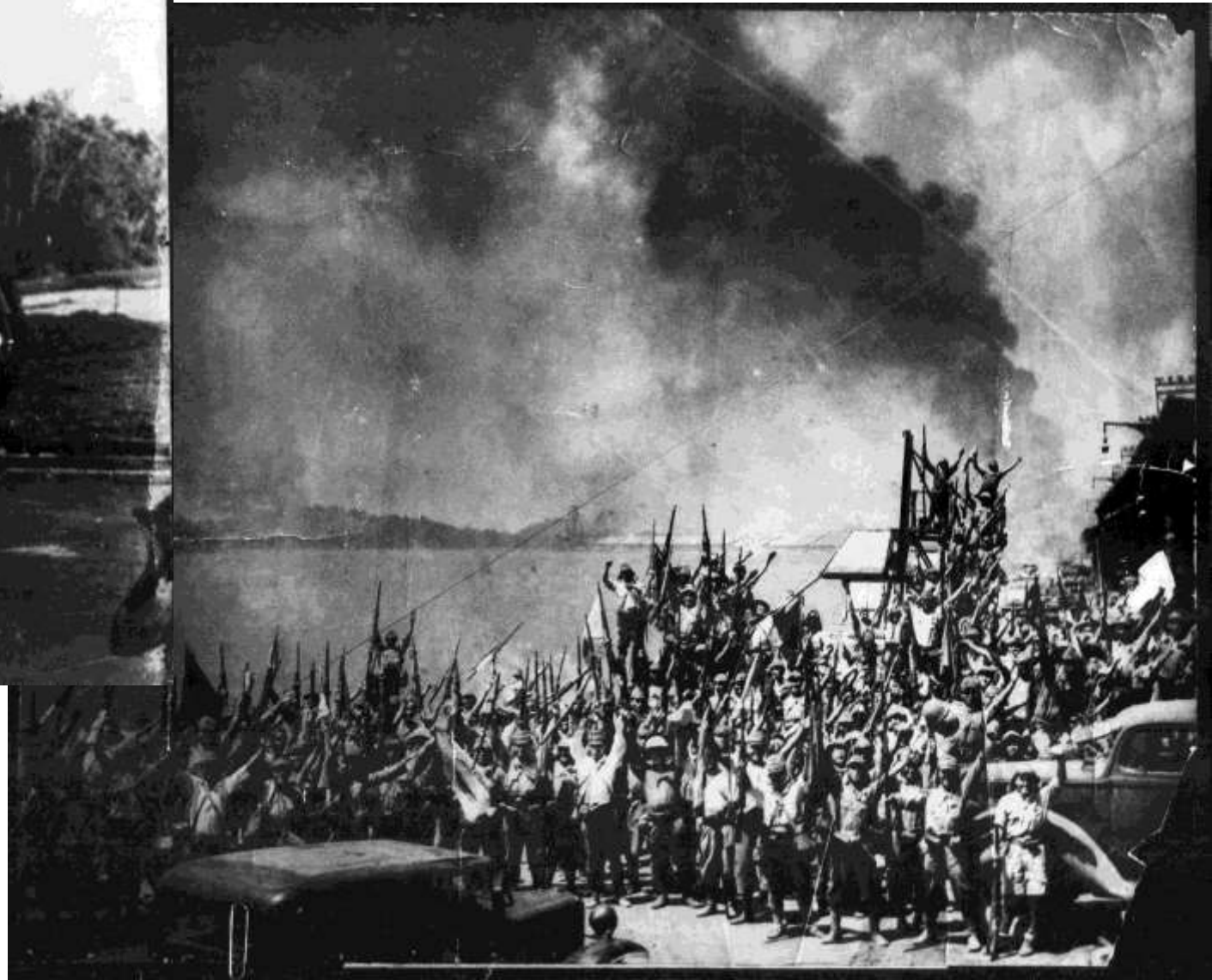
Singapore, 1942



Lieutenant General Yamashita



2/15/42, British surrender at Singapore



Japanese celebrate at the Empire Dockyard



Lieutenant General Yamashita,  
The Tiger of Malaya

Japanese Empire, February 16, 1942



Bataan



Bataan Peninsula.



President Franklin Delano Roosevelt

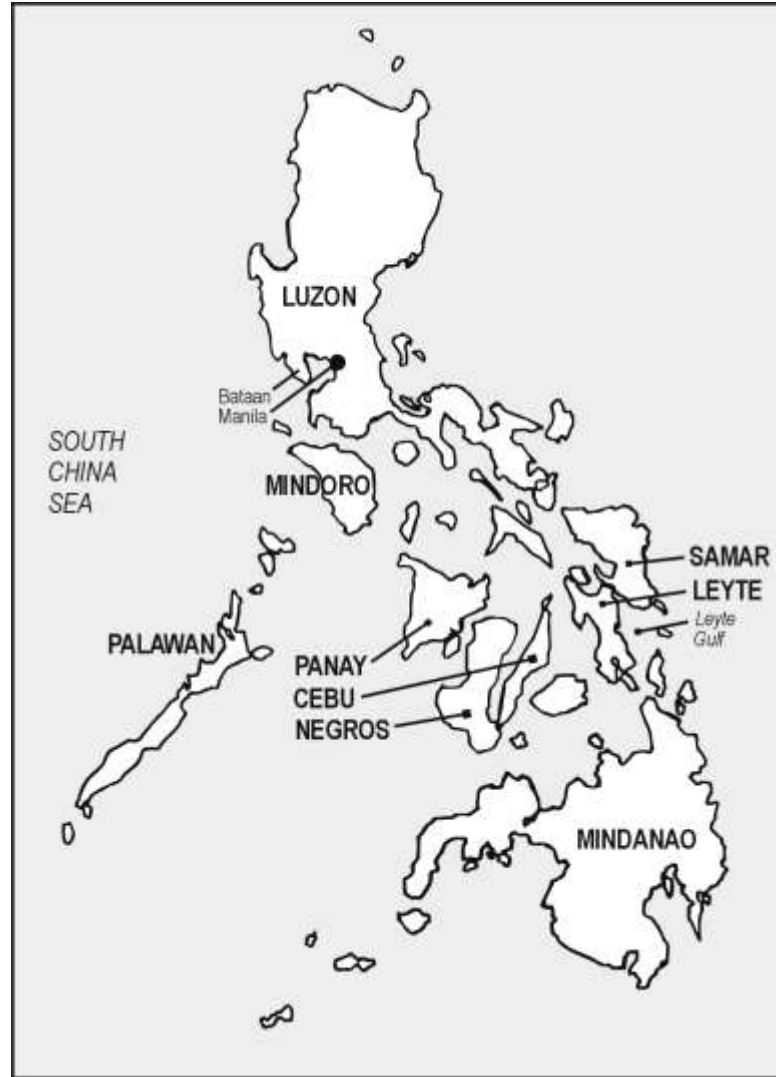


Lieutenant General Douglas MacArthur





Major General Jonathon Wainwright



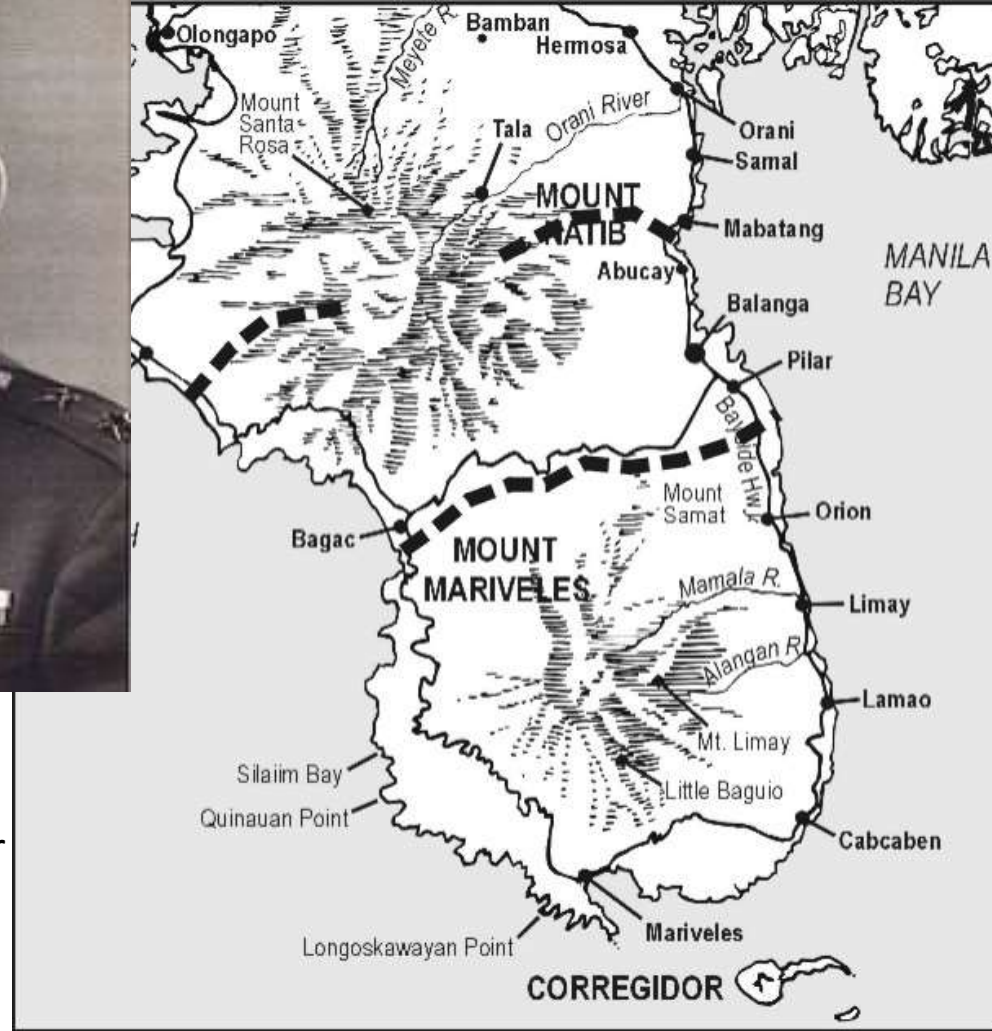
The Philippines



Lieutenant General  
Jonathon Wainwright



Major General  
Edward P. King,  
Bataan commander



Lieutenant General  
Jonathon Wainwright



Lieutenant General  
Masaharu Homma,  
Japanese commander



Bataan Peninsula.





Bataan, Field Hospital

Bataan Field Hospital



Major General Edward King surrenders Bataan to the Japanese

# BATAAN COMPLETELY OCCUPIED BY JAPANESE

## Japanese Forces Take Cebu

### 15 Generals Among War Prisoners

MANILA, April 24 (Special)—General MacArthur announced today that the Japanese had completely occupied the island of Bataan, and that they had taken Cebu, the main Philippine island to the south. A total of 15 general officers, including 12 general and 3 brigadier generals, were taken prisoner.

The military captured included Major General Edward P. King, commander of the 1st Cavalry Division; Major General Albert Jones, commander of the First Army Signal; Major General George F. Parker, commander of the 2nd and 4th Divisions; Major General Clarence B. Shuman, commander of the Fifth Division.

The announcement said that the main island of the Philippines during the war period occupied in 130 years including more than 100,000 inhabitants, 900 soldiers, 1000 officers including General King, 1000 civilians and many other war and military.

The main Bataan Province is four miles long and the Japanese General Shuman, the Philippine Corps said in its announcement on April 23.

Bataan came under Japanese control following the capture of Major General Edward P. King, 25, commander of the 1st Cavalry Division, the 1st Cavalry Division of the Philippine Army. Major General Albert Jones, commander of the 1st Cavalry Division of Bataan, had also been captured, according to the Philippine Corps. Captured with General King were also Capt. Charles C. Jones and Capt. Charles C. Jones.



Japanese officers and soldiers were distributing food to Filipino civilians whose homes were razed before they fled on the Bataan front. The Japanese also were searching for the sick and helped war prisoners in all other ways possible, according to reports from Manila.

### Gen. Homma Thanks Officers And Men Under Him for Heroism

MANILA, (Special) April 24.—General Homma, commander of the Japanese forces in the Philippines, said the great heroism of the Japanese forces in the Philippines, and the great heroism of the American forces in the Philippines, was the world's greatest heroism. He said he was proud to be a Japanese soldier in the Philippines.



Gen. Tomoyuki Homma, commander of the Japanese forces in the Philippines, is shown in a photograph taken by the Japanese forces here.

### Surrender Of Bataan Praised

The surrender of Bataan to the Japanese forces was a heroic deed, according to reports from Manila. The Japanese forces praised the heroism of the American forces in the Philippines. The Japanese forces praised the heroism of the American forces in the Philippines.

### Japanese Flag Planted In Cebu City

MANILA, April 24 (Special)—The Japanese flag was planted in Cebu City today, according to reports from Manila. The Japanese forces planted the flag in Cebu City today.

The Japanese flag was planted in Cebu City today, according to reports from Manila. The Japanese forces planted the flag in Cebu City today.



The surrender of Filipino-American troops on the main island of Bataan was official in this Manila news conference in Bataan when Major General Edward P. King, 25, commander of the 1st Cavalry Division, was seen with Gen. Shuman, 25, commander of the 1st Cavalry Division, and other officers of the American forces here.

# The Death March

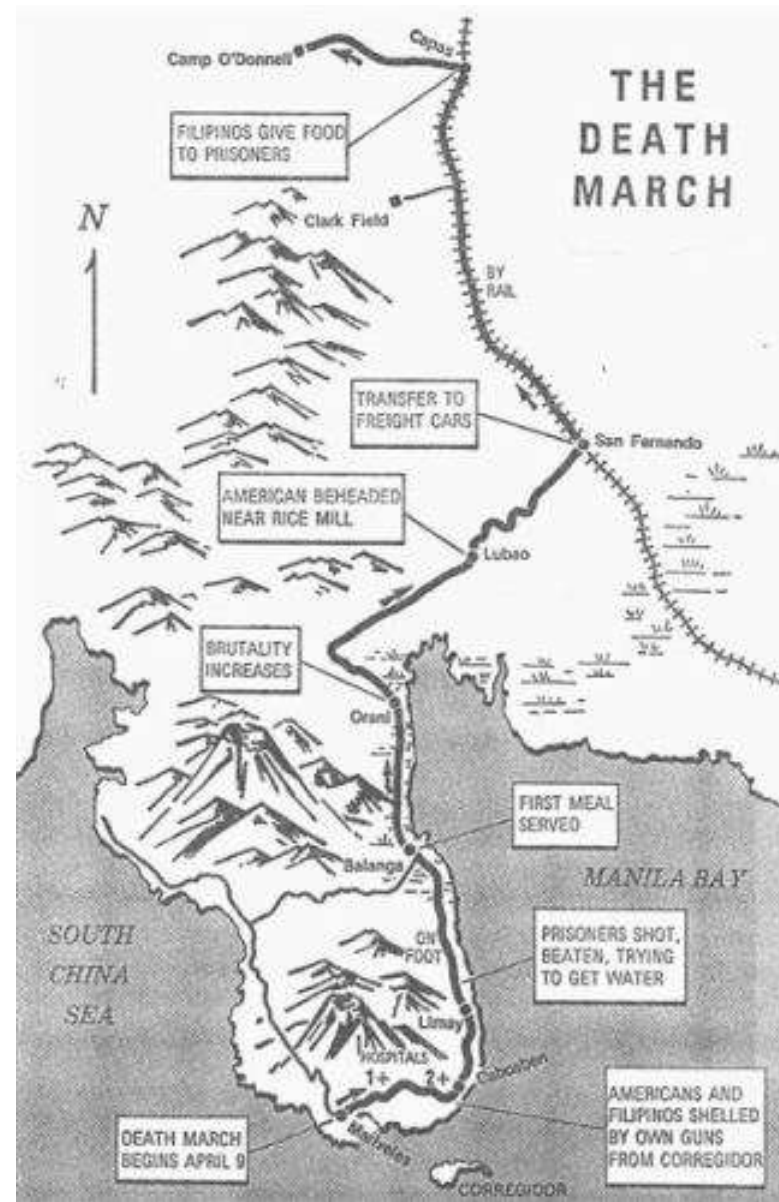




Bataan soldiers surrender



Japanese soldiers loot the Americans and Filipinos of watches, rings, money, personal items.



The route north



The Death March begins at Mariveles



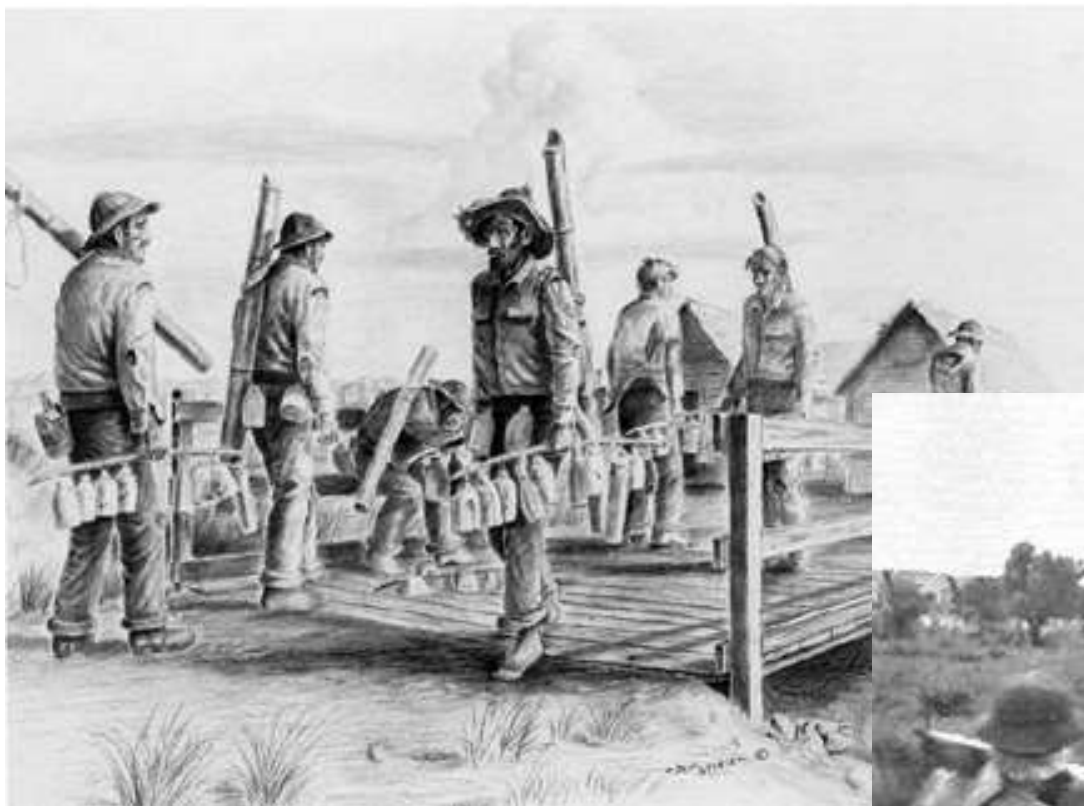




Five to six days on foot, for those who made it.



Camp O'Donnell "welcome" speech



Camp O'Donnell







**Chris Schaefer**

**[Chris.Schaefer@bataandiary.com](mailto:Chris.Schaefer@bataandiary.com)**

**832-428-1977**

**[www.BataanDiary.com/Osher.html](http://www.BataanDiary.com/Osher.html)**